

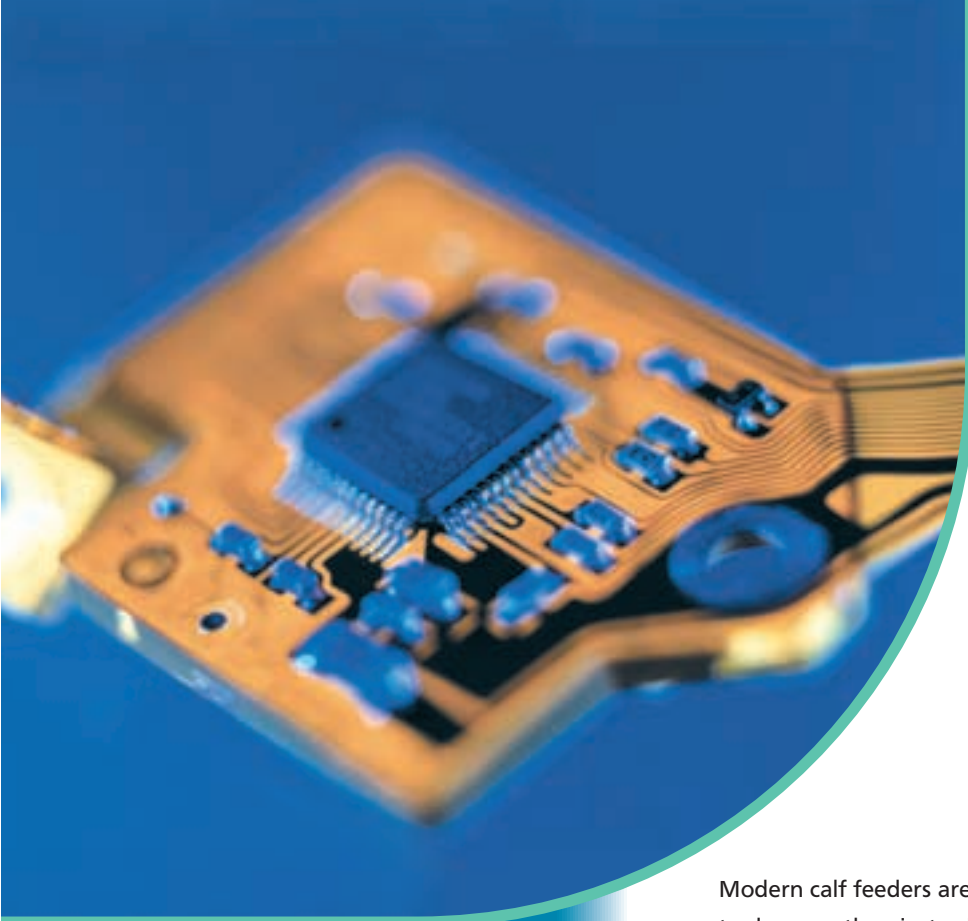


**Automatic Calf Feeder**

■ **Stand Alone<sup>®</sup> 2000**

**The Extra-Class**





# First-Class Technology

Modern calf feeders are expected to do more than just calf feeding. They have to take labour-intensive cleaning and checking work off the farmer. At the same time, they should facilitate animal check e.g. thanks to the Automatic Fever Measurement System.

Förster-Technik has been awarded several prizes for Stand Alone® 2000 setting high standards in this extra-class.

- Gold medal for automatic calibration awarded in 1998 by DLG (German Agricultural Society)
- Machine of the Year 1999
- Gold medal for Automatic Fever Measurement System awarded in 2000 by DLG (German Agricultural Society)
- Innovation of the year 2001



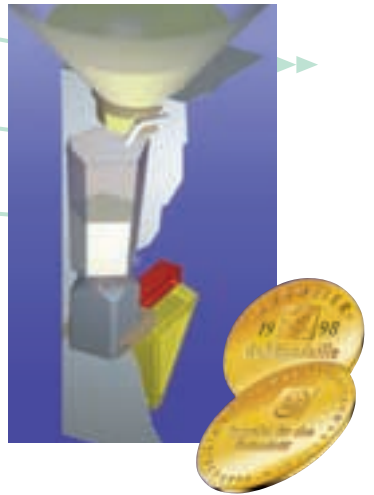
## Stand Alone® 2000 – Outstanding Feeding Technology

### Automatic Calibration

As feed components have variable dosing weights you have to check them regularly. Manual calibration is often neglected, leading to higher feed costs due to excessive milk powder consumption, digestive troubles and poor increase in weight due to deficiency of milk powder.

Automatic calibration prevents dosing faults sparing you labour-intensive, manual calibration. The weighing unit located below the mixer jar automatically checks and rectifies the dosing weights of the feed components.

At the same time, automatic calibration carries out a permanent operational check of the automatic feeder so that operational troubles can be detected in good time.



Gold Medal for Automatic Calibration

# Reliable and Innovative down to the Last Detail

## Precision Doser for Powder Additives

- Gram-exact distribution of highly concentrated additives by cellular wheel dosing
- Large storage capacity (up to 4 kg) for e.g. electrolytes and dietary additives
- No incorrect dosing due to bridging
- Thermal vapour screen facilitates dosage of extremely hygroscopic additives.

## Remote Control at the Feeding Box

- Feed entitlement and last portion are displayed
- Feeding pump:
  - Push-button to convey the milk from the feeding station directly to the teat
  - Calves get easily accustomed to the feeder.
  - Stimulates those calves that are weak in drinking

## Automatic Calibration

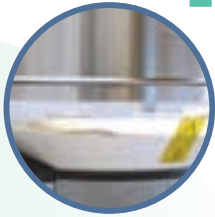
- Fully automatic calibration of the feed components
- Permanent operational check and automatic rectification of the calibration values where appropriate





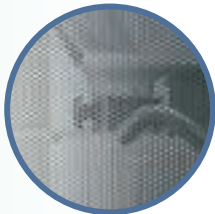
## Milk Powder Hopper and Powder Dosage

- Transparent powder hopper for easy level check
- Special dosing system for all milk powder types
- Regular dosage thanks to load-independent driving motor (no direct-current motor)
- Long-life spur gear with stainless steel gearwheels



## Protection against Flies

- Reliably tight against flies
- Does not impair dosing precision of milk powder and additives, as water vapour can easily escape through the openings of the large fly screen
- Easy to clean



## Intensive Mixer with Electrodes for Deduction of Remaining Quantities

- Powerful intensive mixer ensures rapid dissolution of the milk powder.
- Fine sieve retains the milk powder until its complete dissolution.
- Splash-tight long-life mixer motor
- Special multiple sealing systems ensure that no liquid gets into the motor even if the mixer sealing is damaged.
- Highly precise deduction of the remaining quantities thanks to the above-mentioned electrodes





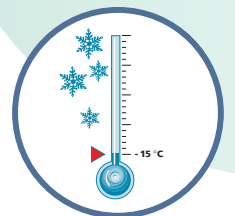
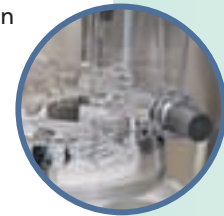
## Control- and Operating Unit

- The well illuminated display with big letters can be swivelled towards the feeding station.
- The display shows feed entitlement of the current calf as well as of other calves. It can be clearly read from the feeding station.
- Quick-keys for direct selection of frequently used functions
- Prepared for gradient- and servo-control, as well as for parallel accustoming



## Heating Regulation Controlled by Feed Temperature

- The feed temperature in the mixer jar regulates the heating temperature automatically.
- Always exact mixing temperature in consideration of ambient and milk powder temperature
- After feed breaks the water temperature of the first portion will be higher than usual.
- During cleaning processes the water is automatically set to a higher temperature.
- Slight calcification risk thanks to special heater with large stainless steel heating elements



## Frost Protection

- Under operating conditions, the milk- and water-supplying components located inside the automatic feeder are not endangered to frost (for locations exposed to extreme frost we recommend a heating cable which is available as an accessory).
- Potential remaining portions in the mixer jar are drained off.
- Remaining quantities in the suction hose are drained off or pressed out by compressed air.



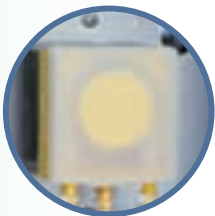
## Cleaning

- Fully automatic mixer cleaning
- Fully automatic heat exchanger cleaning. In addition, the effective sponge cleaning facilitates removal of milk deposits.
- Suction hose cleaning with water after visit to the feeding station
- On request: automatic detergent dosage even for Powder feeders
- On request: pulsating compressed air cleaning ensuring clean and frost-resistant suction pipes up to the top of the teat.



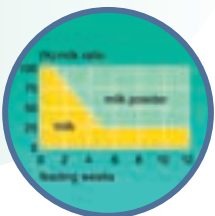
## Detergent Dosing Pump with Sensor for "Signal Empty"

- Precision detergent dosing pump (standard on Combi feeders)
- Receptacle with sensor for "signal empty" indicating when the detergent should be refilled



## Milk Feeding

- High-performance heat exchanger heats cool milk more rapidly than calves are able to drink from 4 to 42 °C.
- 100 % whole milk feeding
- Automatic and gentle change from 100 % milk to milk powder+water via a milk ratio plan
- Different milk ratio plans for heifer calves and bull calves (up to four feeding groups)



## More than just Milk Feeding:

It goes without saying that **Stand Alone® 2000** offers a wide range of expansion options:

- Concentrate feeder with consumption check



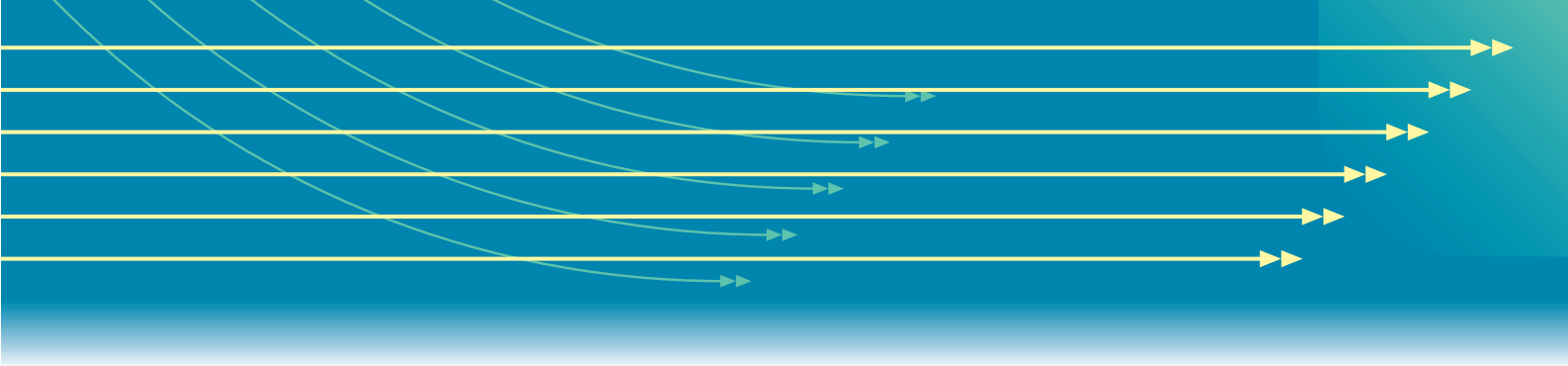
- Half-body scales in the feeding station



- PC-Program "Kalb-Manager"



**Being Ahead in the Greatest Detail**

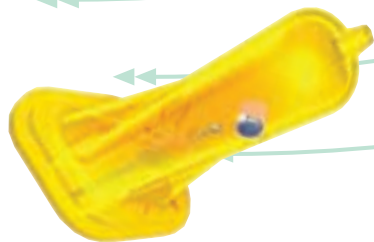


### Automatic Fever Measurement System at the Teat

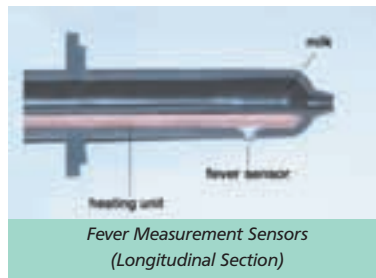
The sooner you detect infectious diseases the more effective you can treat the calves. In this way, you can avoid animal losses, decrease veterinarian and medicine costs and reduce suffering of the animals.

The Automatic Fever Measurement System at the teat allows you for the first time to detect in good time calves being running a fever thanks to regular measurements. Developmental curves lasting several days and other symptoms facilitate making a reliable diagnosis.

A completely new teat consisting of a heated and intelligent measuring sensory mechanism records the temperature of the tongue during calf's feed intake.



Teat for Automatic Fever Measurement System



Fever Measurement Sensors (Longitudinal Section)

The measured temperature is then stored and displayed by the processor of the automatic feeder and – should the situation arise – the relevant calf is displayed as an alarm calf.



Gold Medal for Automatic Fever Measurement System

## Further First-Class Extras!!

### Two in One Go – Parallel Accustoming Set

In order to get a large group of calves accustomed to the teat more rapidly, calves may be fed simultaneously at two feeding stations by means of the parallel accustoming set. The milk amount is determined for each individual calf by an automatic measurement system with electronic quantitative determination.



### 3rd and 4th feeding station – When two are not enough

Stand Alone® 2000 can provide up to 30 rearing calves and up to 20 veal calves per feeding station with milk. If two feeding stations are not enough, the automatic feeder gives you the possibility to connect up to 4 feeding stations. Though, altogether Stand Alone® 2000 should feed 80 calves at most.

**Being Ahead thanks to Forward-Looking Innovations**

# Specifications

## General Data

- Storage capacity, powder hopper approx. 35 kg
- Heating capacity 2.7 kW to 3.8 kW
- Power supply 200V/230V/240V/400V
- Milk preparation 2.5 to 3 l/min
- Feeding stations up to 4
- Number of rearing calves 20 to 30 per feeding station
- Number of veal calves 15 to 20 per feeding station

## Models

- Milk powder+water feeder
- Combi feeder (utilizing milk powder+water and fresh milk)

## Standard Equipment

- Stainless steel finish
- Hand-actuated feeding pump: young calves easily get accustomed to the feeder. You can operate it from the feeding station
- Stop valve for feeding station
- Heating regulation controlled by feed temperature
- Heat exchanger with separate heating circuits and circulation pump for Combi feeders
- Fully automatic heat exchanger cleaning and stainless steel milk pump (Combi feeders)
- Dosing pump for automatic detergent dosage and sensor for "signal empty" (Combi feeders)
- Mixer outlet valve

## Extras and Accessories

- Automatic calibration
- Precision doser for powder additives with 4 kg storage capacity
- Dosing pump for liquid additives
- Magnetic stirring device for liquid additives
- Dosing pump for automatic detergent dosage; with sensor for "signal empty" (Powder feeders)
- Servo-control for feeding stations being distant to or higher than the automatic feeder
- Gradient control for feeding stations being below the automatic feeder
- Parallel accustoming set
- Large protection against flies which can be mounted together with the precision doser and the dosing pump
- 3rd and 4th feeding station
- Remote control for further feeding stations
- Powder hopper top part to store 50 kg milk powder

## Any further questions?

**Do you need a personal advice? Then get in touch with one of our dealers on the spot or directly with us.**

### Förster-Technik GmbH

Gerwigstraße 25

D-78234 Engen

Tel. +49 (0) 77 33 / 94 06-0

Fax +49 (0) 77 33 / 94 06-99

E-Mail: [info@foerster-technik.de](mailto:info@foerster-technik.de)

Internet: [www.foerster-technik.de](http://www.foerster-technik.de)

